

# PARKMORE BUS PRIORITY SCHEME

## NEWSLETTER - ISSUE NO. 5

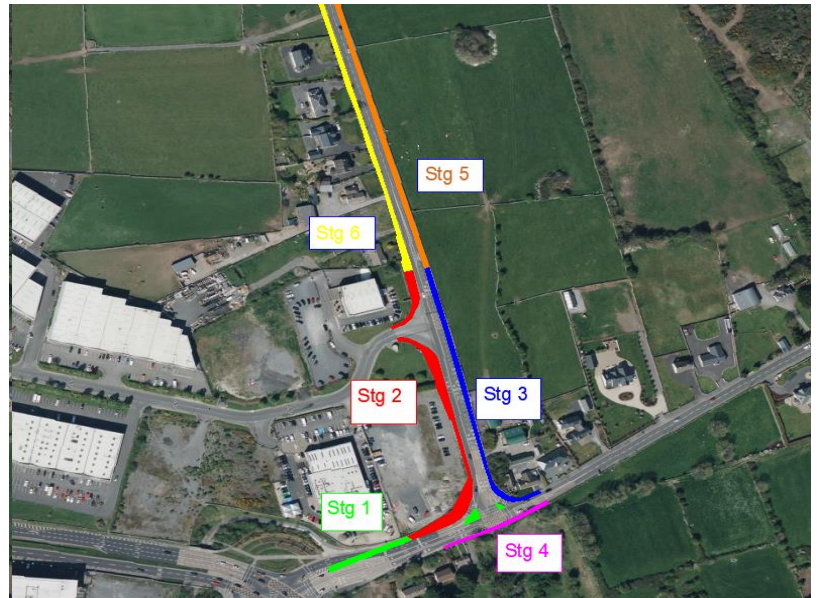
14<sup>th</sup> May 2024

### WELCOME TO THE 5<sup>th</sup> ISSUE OF THE PARKMORE BUS PRIORITY SCHEME NEWSLETTER

Construction of the Parkmore Bus Priority scheme has been ongoing since the 19<sup>th</sup> February with good progress being made on works at Monivea Junction, Parkmore Road and Ballybritt Crescent. The following gives an outline of works planned for the next 4 weeks:-

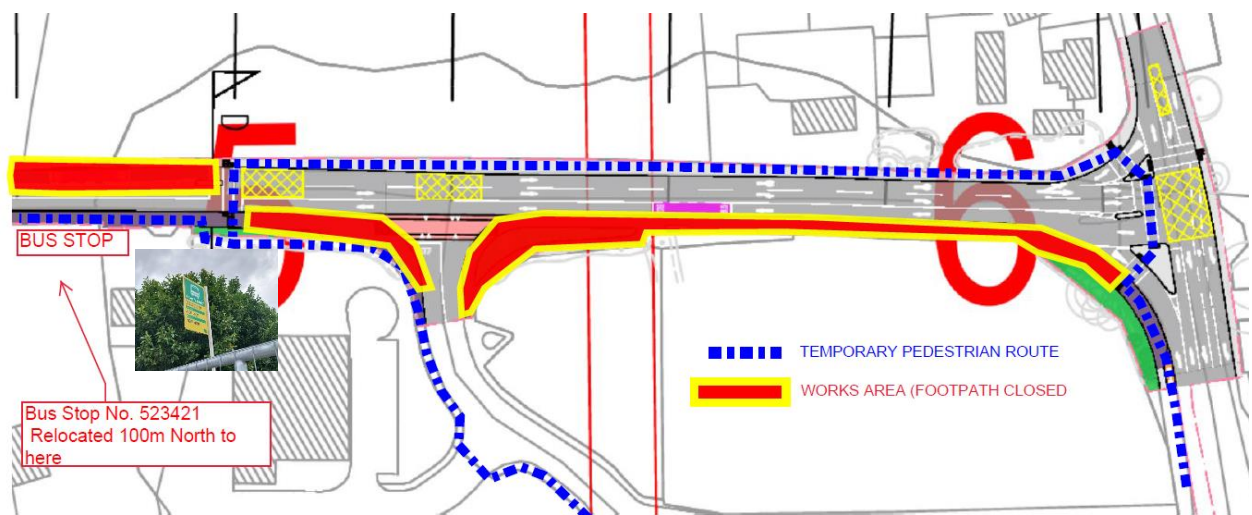
#### Day shift works:

- Drainage, ducting and public lighting installation works is complete in Stages 1,2, 3 and 5. Works over the next period will focus on kerbing, concrete footpath and surfacing works in Stages 1,2, 3 and 5.
- Temporary traffic management measures, including off-peak lane closures and temporary pedestrian and cycleway diversions, will also be in place around the works areas as is necessary. Please refer to sketch below showing the temporary pedestrian diversion route required to facilitate kerbing and footpath works in Stage 1 and Stage 2 Areas.



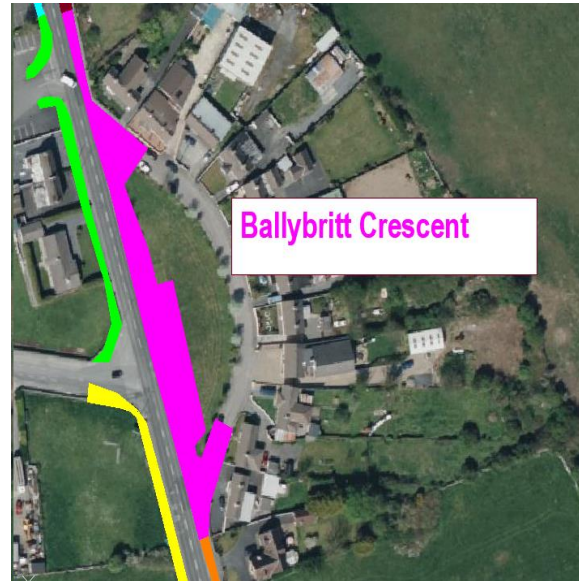
#### Revised Pedestrian Diversion Route for Stage 1 and 2 Works:

- To facilitate completion of footpath works in Stage 1 and Stage 2 areas, the following temporary pedestrian diversion route will be in place as per the sketch below from the Wednesday 22d May for a period of 8 weeks.
- The existing Bus Eireann Bus Stop No. 523421 serving the 401,409, 427 and 428 bus routes will be relocated 100m north for a period of 8 weeks.
- Temporary pedestrian management signage will be in place advising of pedestrians of the new pedestrian route and relocated bus stop location.



## Ballybrit Crescent Works (Dayshift) Works:

- Works is progressing in the Ballybrit Crescent area with kerbing works now complete.
- Works over the coming 4 weeks will be focused on bus shelter installation, footpath finishing and surfacing works.
- Landscaping works, apart from new tree planting, is planned to be completed in late May, weather dependent. New tree installation will be planned for Autumn season
- Both entrances to Ballybrit crescent will be maintained for the majority of works, but there will be periods where one entrance will need to be closed to facilitate construction of the new pedestrian crossings.
- Note - Bus Stop 523441 will be relocated a short distance (30m North) towards the Spar Shop for a duration of 4 weeks to enable footpath and road construction at its current location



## Night shift works:

- Night shift works will be ongoing in Stage Areas 1 to 6 from the 16<sup>th</sup> May to 30<sup>th</sup> June.
- Night shift works will run from 6:30pm in the evening to approximately 6.00am the following morning.
- Temporary traffic management measures, including some lane closures, will be required from the Briarhill Junction to Parkmore Road to facilitate the works.
- Temporary pedestrian and cycleway diversions will also be in place around the works areas as is necessary.

**For further information:** Contact us at Jons Civil Engineering 0860835461 or [donalkelly@jonscivil.ie](mailto:donalkelly@jonscivil.ie)